



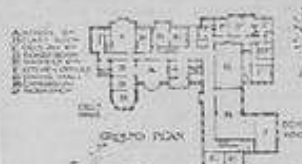
Rev. I. SAMUEL,  
Hon. Secretary.



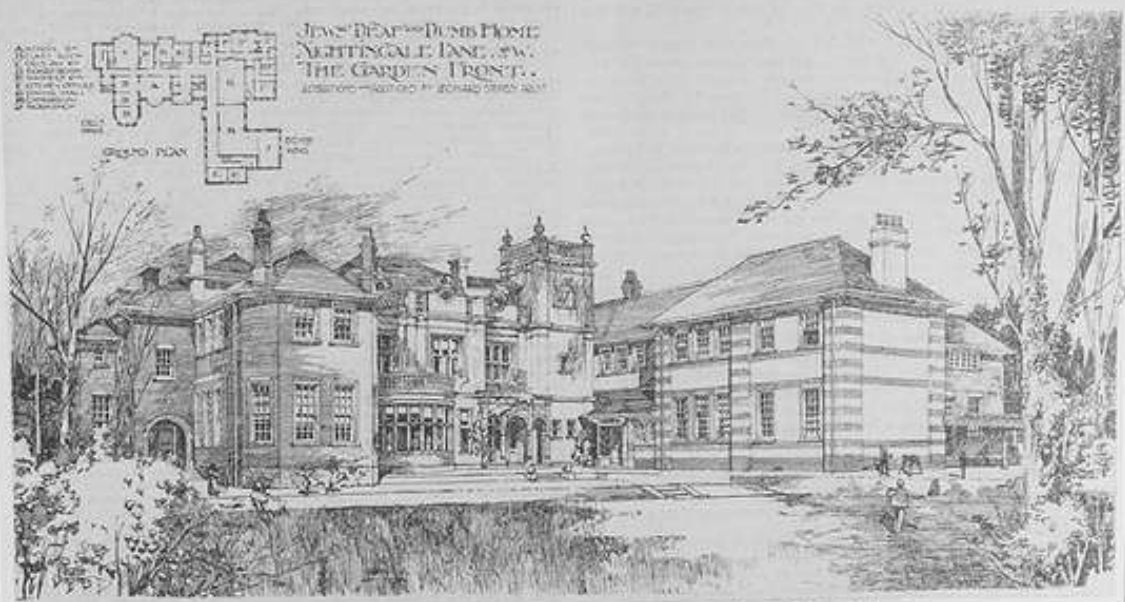
Mr. EDWARD STERN,  
President.



Sir P. MAGNUS,  
Ex-President and Vice President.



DEAF AND DUMB HOME,  
NIGHTINGALE LANE, S.W.  
"THE GARDEN FRONT."  
DESIGNED BY G. G. GIBSON, ARCHT.



THE DEAF AND DUMB HOME, FROM THE LAWN.



AT WORK.



THE DINING HALL.



AT PRAYER.