



Sunday Pictorial National Exhibition of children's art

Introduction

Give a boy a knife and a piece of wood, and he'll produce something that may not be great sculpture, but which is almost certain to be pleasing to the boy himself.

What he has done is to express one of his own thoughts in three dimensions.

This is the whole satisfaction of sculpture, whether you're a Michelangelo — seeing an angel imprisoned in a block of stone — or just an ordinary father showing your children how to carve the face on a turnip lantern for Hallowe'en.

This desire to create shapes in three-dimensions is deep-seated and found in all parts of the world in all ages.

It is probably older than painting itself.

Certainly, there are many children who find it easier to work 'in the round' with a knife, a chisel, or just their own fingers, moulding soft clay, than applying colour with a brush to a flat surface.

This is why we have made Sculpture the craft for 1961 in the fourteenth annual National Exhibition of Children's Art organized by the Sunday Pictorial.

It has provoked a huge entry.

In fact, the Exhibition as a whole has drawn the highest entry for six years. The number of paintings received totalled 37,269.

Our congratulations to the children who have swamped us with this artistic tidal wave.

Our thanks to the teachers who have stirred so many young imaginations.

And our sympathy, as always, with the judges who are put in the position of the boy with the penknife, and told to whittle the thirty-seven thousand entries down to a delicately balanced few hundred. They do it, I assure you, with a full awareness that every entry excluded means disappointment to some child. Which makes their job doubly hard.

R. T. PAYNE
Editor, Sunday Pictorial

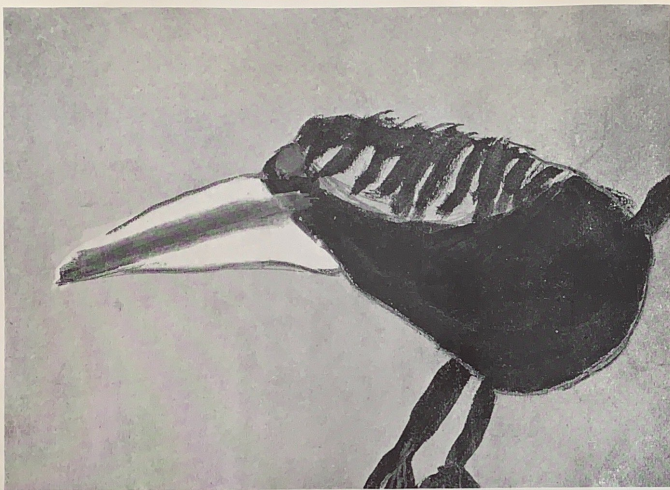
Advisory Committee
SIR HERBERT READ
President, The Society of Education through Art
MR. GORDON ARCHIBALD
Superintendent of Art, Aberdeen Education Committee
Mr. E. M. O'R. DICKEY
Formerly Staff Inspector for Art, Ministry of Education
MR. EDUARDO PAOLOZZI
Sculptor
MR. VICTOR PASMORE
Artist
Mr. R. R. TOMLINSON
Formerly Senior Inspector of Art, London County Council
MR. GABRIEL WHITE
Director of Art, The Arts Council of Great Britain

Craft Committee
Mr. Eric Austen
Mr. Eduardo Paolozzi
Mr. Victor Pasmore
Mr. R. R. Tomlinson

Preliminary Selection Committee for Pictures
Mr. John Clemence
Mrs. Nornie Durell
Mr. Tom Hudson
Mr. Frank Tuckett

1961

one shilling



48 'A Crow' Ian Milne (6)

Foreword

It is an excellent thing that through this annual National Exhibition of Children's Art the attention of the public is drawn to the remarkable work in art and crafts which is to be found up and down the country in our schools. Of course this is an aspect of the curriculum which lends itself to display more generously than any other subject, and consequently comes into prominence on Speech Days and other public occasions in the life of a school. But till fairly recently it has often been a barefooted cinderella. It would be rash even today to think of glass slippers, but most schools nowadays accord the young lady at least a serviceable pair of sandals.

The climate of opinion in the country towards the arts generally has become far more propitious in the last few years. So much so that we can take a national exhibition of children's art such as this almost for granted as something convenient, compelling and commendable. This was scarcely so fourteen years ago when the *Sunday Pictorial* organised the first of these exhibitions. It would not be amiss therefore to give a nod of recognition to what was then a bold and imaginative act, and a wink of pleasure that it has paid off and goes each year from strength to strength.

In the teaching of arts and crafts as in so many other aspects of education today we must be grateful for the pioneering work of our Infant

Schools. They were the first to appreciate that art was something to be experienced rather than something to be learnt. Naturally in the process one was learning all the time, but the most important thing was the doing of it, or to be more high falutin' the act of creation. Nowadays in any good infant school, painting, modelling, 'constructing' are an integral part of the normal and natural means of expression—expression of facts, expression of ideas, expression of oneself. It is not therefore something apart and self-contained, the art lesson, with its special little corner on the timetable, but it permeates the whole life of the school. It is part of English, part of scripture, even part of mathematics (I hope this is not too pompous a word for surely infants are concerned with notions of space as well as questions of number). Anyone with knowledge of the remarkable standards of work to be found in our best infant schools would acknowledge the great contribution which all the creative work in arts and crafts is making towards the vigour and liveliness of the work in the three R's; most of all the prolific and imaginative writings. The arts are in their own right a necessary means of communication, but they also stimulate and liberate our powers over other more universally accepted forms of human communication.

The older children grow the more they find the arts becoming compartmentalised (if there is such a dreadful word to describe a dreadful thing). At

the secondary stage for many children, particularly alas the cleverest, they are compartmentalised out of their life altogether. No doubt as life becomes more complex, and as children grow older, the process of learning has to be packeted into different subjects, or better into different broad areas of study, but for many all contact in lesson time with such a wide and enriching area as the arts, whether they be visual or aural, is entirely removed. This is done for the most worthy of motives by people suffering from examination fever. They fear that even a couple of periods a week devoted to the arts may jeopardise success in those G.C.E. examinations. I am convinced that this conception of the arts as a trill which those who have to wrestle with examinations can readily and indeed must forego is fundamentally unsound. For the majority of us, contact with the arts in an active role in some mysterious way releases energy within us, opens new windows, feeds with good nourishment our emotions. The result in general terms for a very small outlay is better scientists, better mathematicians, better technologists, better linguists and historians. As a matter of sheer economics in a competitive world this country needs the arts.

STEWART C. MASON
Director of Education for Leicestershire
Vice Chairman, National Council for Diplomas in Art & Design.

Ages 5-7 accepted

- 1 **'Etelvina's Dragon'** Etelvina Almeida (5)
Beaufort House Infants' School London SW6
- 2 **'The Cow in the Field'** Bernard Baber (6)
Clutton Primary School Nr Bristol Somerset
- 3 **'Cowboys & Indians'** Jonathon Beard (5)
Elm Green School Chelmsford Essex
- 4 **'The Wind in the Trees'** John Beverton (7)
Ryecroft School Knockholt Kent
- 5 **'Jacko the Monkey'** Stephen Blundell (5)
Newport County Primary Infants' School London E10
- 6 **'The Vikings Sail Back Home'** David Bott (7)
Etheridge Primary Infants' School Bilston Staffs
- 7 **'Hans & Lotte Hass in the Indian Ocean'** David Bott (7)
Etheridge Primary Infants' School Bilston Staffs
- 8 **'Bonfire Night'** Peter Bradbury (5)
Stapenhill St. Peters Infants' School Staffs
- 9 **'A Queen'** Judith Burrow (7)
St. Runwald's School Colchester Essex
- 10 **'Trees & Rain'** Dennis Christie (7)
Cornhill Primary School Aberdeen Scotland
- 11 **'My Mother & Sisters'** Patricia Coleton (6)
Bedfont Infant School Bedford Midds
- 12 **'Bonnie & Angela'** Ann Collier (7)
Kingsnorth County Primary School Hants
- 13 **'The Circus'** Sharon Coombs (6)
Whipperley County Primary Infants' School Beds
- 14 **'The Football Match'** Leonard Cotgrove (7)
Fairways Infants School Leigh-on-Sea Essex
- 15 **'Sentries outside the Palace'** Stephen Crooke (7)
Whipperley County Primary Infants' School Beds
- 16 **'The Ram in the Thicket'** Dawn Davidson (7)
Channing School London N6
- 17 **'Big Waves at Sea'** Stuart Dixon (5)
Canforth North Rd County Infants' School Lancs
- 18 **'My Friend'** John Dyson (7)
Skelmithorpe County Primary School Yorks
- 19 **'The Lion in the Jungle'** Joy Fisk (6)
All Saints School London SW15
- 20 **'Horse Grazing'** Jessalinda Franks (7)
Highfield School London N6
- 21 **'This is a Man'** Robert Germain (5)
Thomas Willingale Infant School Loughton Essex
- 22 **'The Tree, Gray Women Mercury & Perseus'** Ian Glen (6)
Phoenix House School Formby Lancs
- 23 **'A Fishing Boat'** Christopher Goodham (7)
Priory Infants' School Slough Bucks
- 24 **'Sailors on the Climb'** Kenneth Grabauskas (6)
St. Antony's School Chigwell Essex
- 25 **'Playing in the Garden'** Andrew Hardwick (5)
Monteney Infants' School Sheffield 5 Yorks
- 26 **'The Night War of the R.A.F.'** Norman Hart (7)
St. Josephs Infants' School Gateshead 8 Co Durham
- 27 **'Sunshine in the Wood'** Emma Hartley (5)
Dunannie School Petersfield Hants
- 28 **'Playing at Playtime'** Lynn Hemmingsley (6)
Etheridge Primary Infants' School Bilston Staffs
- 29 **'The Dragon & His Cage'** Alyssoun Henschel (6)
Dunannie School Petersfield Hants
- 30 **'The Farmer & his Wife go out Walking'** Nina Hibbert (7)
Park Walk Infants' School London SW10
- 31 **'Whiskers'** Susan Hillman (6)
Launcelot Infants' School Bromley Kent
- 32 **'Playing in the Snow'** Angela Holliday (7)
Tollesbury County Primary School Malden Essex
- 33 **'A Big Bowl of Fruit'** Tony Holte (5)
Courthouse Green Infants' School Coventry Warks
- 34 **'Beverley Minster'** Gordon Horton (7)
Beverley Minster Infants' School Beverley Yorks
- 35 **'In the Country'** David Johnson (7)
Aberdeen Grammar School Aberdeen Scotland
- 36 **'Going to Town'** Susan Johnson (7)
St Lukes Primary School Lancs
- 37 **'The Angels at Christmas'** Diane Jones (7)
Glenfield County Infants' School Leicester
- 38 **'Winter'** Christine Jowitt (7)
Stanningley County Primary Infants' School Leeds Yorks
- 39 **'The Farmyard'** Michael Kean (6)
Ivanhoe County Primary School Conisbrough Yorks
- 40 **'The Queue'** William Kinch (7)
John Ruskin Junior School London SE5
- 41 **'My Castle'** Antony Lambert (6)
Springfield School London SW6
- 42 **'Ship'** David Levy (5)
London N15
- 43 **'Lions Cage'** David Levy (5)
London N15
- 44 **'An Indian Outside his tent'** Richard McDonald (5)
Joseph Lancaster Infants' School London SE1
- 45 **'The War Planes Going Over a House'** Nigel McKeeman (6)
Dunannie School Petersfield Hants
- 46 **'A Little Girl Coming Through the Dark'** Andrew Mills (6)
Thomas Jones Junior Mixed Infants' School London W10
- 47 **'A Crow'** Ian Milne (6)
Thomas Jones Junior Mixed Infants' School London W10
- 48 **'Elizabeth has Gone to Southend to Find a Little Girl'** Carol Mole (6)
Pakeman (Shelburne) Infants' School London N7
- 49 **'Mother Giraffe Feeding her Baby'** Pamela Mould (7)
Etheridge Primary Infants' School Bilston Staffs
- 50 **'Jesus Talking to the People'** Pamela Mould (7)
Etheridge Primary Infants' School Bilston Staffs
- 51 **'The Last Witches'** Pamela Mounsey (7)
St Lukes Primary School Lancs
- 52 **'Boy & Girl in Classroom'** Roderick Newlands (7)
Cornhill Primary School Aberdeen Scotland
- 53 **'Sunset'** Sally Pocock (7)
Highgate Primary Infants' School London N6
- 54 **'A Fire Engine'** Melita Pospisil (6)
Whipperley County Primary Infants' School Beds
- 55 **'My Horse Ginger'** Anne Potter (7)
Riders County Infants' School Havant Hants
- 56 **'A Country Lady'** Linda Pratt (6)
Riders County Infants' School Havant Hants
- 57 **'An Owl'** Paul Reed (5)
Wendell Park Infants' School London W12
- 58 **'At the Circus'** John Riley (7)
Tollesbury County Primary School Malden Essex
- 59 **'Princess Margaret's Wedding'** Gloria Risley (7) Susan Guy (7)
Josephine Hunt (7) Beaufort House Infants' School London SW6
- 60 **'Horses'** Diana Robinson (6)
Abbots Langley Herts
- 61 **'A Boy'** Peter Rowe (7)
Bernards Heath Infants' School St Albans Herts
- 62 **'Pirates'** Anthony Rumble (6)
Pickhurst County Primary Infants' School Kent
- 63 **'Houses in the Dark'** Rosemary Sado (7)
Channing School London N6
- 64 **'The Fairy Castle'** Judith Saint (6)
Dunannie School Petersfield Hants
- 65 **'Learning to Drive a Helicopter'** Warren Seabridge (6)
Etheridge Primary Infants' School Bilston Staffs
- 66 **'A Zoo'** John Sherwood (6)
Whitefield Higher Lane County Primary School Manchester Lancs
- 67 **'A Lion in the Grass'** Alan Smith (7)
Bansley Hill Infants' School Herts
- 68 **'A Lonely House in a Dark Wood'** Beverley Smith (7)
Spring Bank Infants' School Leeds 6 Yorks
- 69 **'A Dark Wood'** Beverley Smith (7)
Spring Bank Infants' School Leeds 6 Yorks
- 70 **'Julie holding an Ice Cream & some Flowers'** Robert Stack (6)
Queens Park Infants' School London W10
- 71 **'The School Bus'** Carol Staley (5)
Stapenhill St Peters Infants' School Staffs
- 72 **'A Long Snake'** Sarah Stirling (6)
Dover Road Primary School Northfleet Kent
- 73 **'Houses at Rye'** Oliver Stobbs (5)
Underhill House School Chart Sutton Kent
- 74 **'Off to the Moon'** Phillp Stokoe (6)
Highfield Infants' School South Shields Co Durham
- 75 **'A Pattern'** Kathryn Sullivan (6)
All Saints School London SW15
- 76 **'Cowboys & Indians Meeting'** James Thomson (6)
Dulwich Village C of E Infants' School London SE21
- 77 **'Frosty'** David Thorburn (5)
Front Lawn County Infants' School Leigh Park Hants
- 78 **'Father Christmas'** Paul Turner (6)
Bernards Heath Infants' School St Albans Herts
- 79 **'Candle Light'** Martin Vincent (6)
Winterborne Kingston Primary School Dorset
- 80 **'An Indian'** David Wallis (6)
Queens Park Infants' School London W10
- 81 **'Figure in Blue'** Denis Whiteside (7)
Fonthill Junior Mixed School Bristol
- 82 **'The Eclipse'** Jane Wilkinson (5)
Channing School London N6
- 83 **'Over the Bridge to Morecambe'** John Wilson (7)
St Lukes Primary School Lancs
- 84 **'A House'** Benjamin Wood (5)
Wellington County Primary Infants' School Staffs
- 85 **'Jets'** Christopher Wren (5)
Earls Heaton Infants' School Dewsbury Yorks
- 86 **'An Indian Lady'** Zacharia Zacharoulla (7)
Pakeman (Shelburne) Infants' School London N7
- 87 **'The Christmas Procession'** Group Work (6)
Bernards Heath Infants' School St Albans Herts
- 88 **'Having Fun'** Group Work (6)
Bernards Heath Infants' School St Albans Herts
- 89 **'Us'** Group Work (6)
Burdett Coult Infants' School London SW1
- 90 **'Playing with Hoops in the Playground'** David Cox (6)
Henleaze Infants' School Bristol
- 91 **'The Far East'** Group Work (6)
St Lukes Primary School Lancs

Ages 8-11
Highly commended

- 94 **'Dinner'** Maurice Cliff (9)
Winterborne Kingston Primary School Dorset
- 95 **'Down the Mine'** John Dickson (9)
Aberdeen Grammar School Aberdeen Scotland
- 96 **'Out for a Morning Ride'** Elaine Johnson (9)
Linden Junior School Leics
- 97 **'Lady'** Ruth Spain (10)
Residential School for Deaf Jewish Children London SW12

Commended

- 98 **'Tiger, Tiger Burning Bright'** Catherine Adams (9)
Linden Junior School Leics
- 99 **'Playing at Boating'** Sarah Brayshaw (10)
Winterborne Kingston Primary School Dorset
- 100 **'Figure at the Window'** Gwen Phillip (10)
Albyn School for Girls Aberdeen Scotland
- 101 **'Whale Fishing'** Anne Purdy (10)
Linden Junior School Leics
- 102 **'My Friend Stephen'** James Stopford (11)
Medlock Secondary Modern School Manchester Lancs

Accepted

- 103 **'A Church Service'** Robin Aldridge (10)
Bushbury County Junior School Staffs
- 104 **'View from a Window'** David Alexander (11)
Daniel Stewart's College Edinburgh 4 Scotland
- 105 **'The Bombed House'** Ellen Arnold (8)
Townsend Primary School London SE17
- 106 **'A Forest'** Christopher Aubanel (10)
The Priory School Banstead Surrey
- 107 **'Cones in Tones'** Ruth Beckett (10)
Stratford County Primary School Warks
- 108 **'Bird in her Nest'** Catherine Benn (9)
St Mary's School Colchester Essex
- 109 **'Elain'** Angela Bromhead (11)
Gesries School Ilford Essex
- 110 **'Nativity Scene'** Linda Buck (8)
Nicholas Gibson Primary School London E1
- 111 **'The Music Room'** Keith Burns (9)
Royal Wanstead Junior School London E1
- 112 **'Salisbury Hotel, Folkestone'** Frances Cheney (9)
Royal Wanstead Junior School London E1
- 113 **'Life on the River Thames'** Ian Chisholm (11)
Erith Technical School Bexley Kent

- 114 **'Danger on the Roof'** Brian Clarke (9)
Linden Junior School Leics
- 115 **'A Complicated Instrument'** Paul Cufflin (9)
Linden Junior School Leics
- 116 **'Rooftops'** Janice Davis (11)
Risinghill School London N1
- 117 **'Yellow'** Eric Davison (11)
Alderman Cape Secondary Modern School Co Durham
- 118 **'Mother's Flowers'** Terence Dilks (11)
Whitegate Junior School Nottingham
- 119 **'Goldfish Bowl'** Brian Dingley (11)
Ashburton Secondary School London E16
- 120 **'The Rescue'** Andrew Edgington (9)
Bushbury County Junior School Staffs
- 121 **'The Elephants Resting Place'** Linda England (11)
Rudstow County Primary School Liverpool Lancs
- 122 **'The Mad Blizzard'** Christine Faulkner (10)
Linden Junior School Leics
- 123 **'Spring Flowers'** Christine Faulkner (10)
Linden Junior School Leics
- 124 **'The Town'** Tom Fish (11)
Risinghill School London N1
- 125 **'Gardening'** Robert Fountain (11)
Hodge Hill Junior School Birmingham 34 Warks

- 126 **'Idea from a Mosaic'** Allan Fraser (11)
Daniel Stewart's College Edinburgh Scotland
- 127 **'The Crash'** Nigel Gooves (9)
Maldenhill County Primary Junior Mixed School Luton Beds
- 128 **'Man Looking in Mirror'** Andrew Gibson (10)
Great Munden Junior Mixed School Ware Herts
- 129 **'Sun Through the Trees'** Michael Gibbs (11)
Sheerwater Secondary School Woking Surrey
- 130 **'Under Water'** Sheila Glide (11)
Marist Covent West Byfleet Surrey
- 131 **'Number Pattern'** Paul Goldman (10)
Balmont School London NW7
- 132 **'Sabotaged Train'** Andrew Guy (11)
Darlington Primary School Totnes Devon
- 133 **'Rocks'** Michael Hailey (11)
Balmont School London NW7
- 134 **'The Nightingale'** Susan Hands (10)
Linden Junior School Leics
- 135 **'The Flight of the White Bird'** Pat Harley (9)
Linden Junior School Leics
- 136 **'Fish'** Steffan Harper (11)
Ripon Grammar School Ripon Yorks
- 137 **'Still Life'** Martin Hawkrigg (11)
Barking Essex



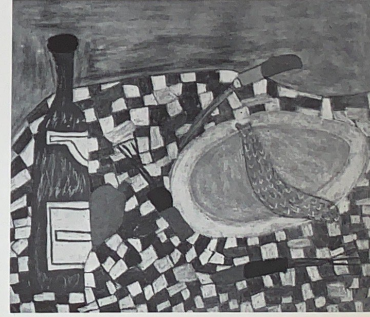
101 **'Whale Fishing'** Anne Purdy (10)



63 **'A Pirate'** Anthony Rumble (6)



9 **'A Queen'** Judith Burrow (7)



181 **'Still Life'** Marian Tili (11)

128 **'The Bogey'** Richard Hemsley (11)
Maldstone Technical School For Boys Kent

Ages 8-11

129 **'Spectators at a Fire'** Patrick Henderson (11)
St Cuthbert's Secondary School Glasgow Scotland

140 **'Things on a Tray'** Karen Hind (8)
St Runwald's School Colchester Essex

141 **'Hairdresser's Shop'** Carolyn Hine (8)
St Runwald's School Colchester Essex

142 **'Chatting in the Classroom'** Trevor Hundleby (10)
Great Munden Junior Mixed School Ware Herts

143 **'Mystery in the Jungle'** Geoffrey Jackson (8)
Littlegrove Junior School Barnet Herts

144 **'A Strange Plant'** Lesley Johnson (11)
Truro County Secondary Girls' School Cornwall

145 **'The Flight'** Janet Kilburn (10)
Linden Junior School Leics

146 **'The Lady on the Balcony'** Jean King (10)
Underhill School Barnet Herts

147 **'Looking out the Window'** Barbara Lawson (11)
Woodlands County Secondary Girls' School Kent

148 **'A Dead Here'** Colin Mace (9)
Little Munden Junior School Ware Herts

149 **'Musicians'** Catherine MacEwan (11)
South Hampstead High School London NWS

150 **'Fish'** George Mawer (11)
Ripon Grammar School Ripon Yorks

151 **'Cleaning an Engine'** Ian McDougall (9)
Aberdeen Grammar School Aberdeen Scotland

152 **'Extraordinary Instrument'** Anthony McGorum (10)
Linden Junior School Leics

153 **'Squares'** Robert Merrick (11)
Stonehouse County Secondary School Glos

154 **'On the Beach'** Michael Minter (10)
St George's School Windsor Castle Berks

155 **'The Funfair'** Stephen Mitchell (8)
Dover Road County Primary Boys' School Northfleet Kent

156 **'A Bottle Cabinet'** Wilson Murray (9)
Daniel Stewart's College, Edinburgh 4 Scotland

157 **'The Christmas Pudding is Ready'** Dawn Mussett (8)
Tollesbury County Primary School Maldon Essex

158 **'Girl with a Blue Necklace'** Linda Nabarro (10)
Residential School for Deaf Jewish Children, London SW12

159 **'Looking for Me'** Lila Naragh (8)
Arts Educational School London W1

160 **'Elsie'** Ronald Park (11)
Woodside Primary School Aberdeen Scotland

161 **'Autumn Tree'** Brian Parsons (11)
St Birinus School Didcot Berks

162 **'Men Working on a High Building'** Margaret Perry (11)
Leyton County High School for Girls London E11

163 **'Still Life'** Derek Petrie (10)
Woodside Primary School Aberdeen Scotland

164 **'Tiger in a Jungle'** David Pugsley (10)
Linden Junior School Leics

165 **'Fairground'** Edward Ramsay (11)
St Cuthbert's Secondary School Glasgow Scotland

166 **'The Cat'** Edward Ramsay (11)
St Cuthbert's Secondary School Glasgow Scotland

167 **'Remulus & Remus'** Caroline Richards (10)
Winterborne Kingston Primary School Dorset

168 **'Trolley Racing'** Paul Riley (10)
Tollesbury County Primary School Maldon Essex

169 **'A Seated Figure'** Carolyn Robb (11)
Albyn School for Girls Aberdeen Scotland

170 **'Portrait of Fisher'** Peter Roberts (10)
Berkhamstead School Herts

171 **'The Owl'** Bridget Rundle (11)
Penwithers Secondary Modern School Cornwall

172 **'Workers Going Into The Raleigh Factory'** John Simpson (11)
Margaret Glen-Bolt Secondary School Notts

173 **'Jesus & The Last Feast'** Susan Skelton (10)
Linden Junior School Leics

174 **'A Wedding'** Brenda Slee (10)
Malden County Primary Junior Mixed School Luton Beds

175 **'Cat in the Undergrowth'** Barbara Smith (10)
Albyn School for Girls Aberdeen Scotland

176 **'Abstract'** Margaret Smith (11)
Imberhome County Secondary School Sussex

177 **'Fish'** David Spinks (11)
Ripon Grammar School Ripon Yorks

178 **'Boy with Freckles'** Roger Sumpton (11)
Heathcote School Stevenage Herts

179 **'Tash on the Hillside'** Tony Swinfield (10)
Linden Junior School Leics

180 **'King's Lynn Harbour'** Roy Thompson (11)
King's Lynn Norfolk

181 **'Still Life'** Marian Tili (11)
Harfield Secondary Modern School Staffs

182 **'Mines'** Philip Tobin (11)
St Helen's R.C. Junior School Brentwood Essex

183 **'Walk in the Park'** Graeme Traill (10)
Cornhill Primary School Aberdeen Scotland

184 **'Fishing on a Cold Night'** Carol Trethewey (11) Lorna Trethewey (11)
Truro County Secondary Girls' School Cornwall

185 **'Cafe Window'** Robert Tyerman (10)
The Hall London NW3

186 **'Fish'** Roger Tyler (11)
Ripon Grammar School Ripon Yorks

187 **'Three Nuns'** Alan Warburton (8)
Fonthill Junior Mixed School Bristol

188 **'The Fishermen'** Marilyn Wash (9)
Tollesbury County Primary School Maldon Essex

189 **'The Best Cow Down from the Mountain'** Jennifer Weathermead (10)
Channing School London N6

190 **'Brick Works'** Robert Whitehouse (10)
Little London Junior School Willenhall Staffs

191 **'Modern Farming'** Merryn Whitfield (10)
Stamford High School Leics

192 **'Tree Against the Sky'** Peter Wilkinson (11)
Cotham Grammar School Bristol 6

193 **'The Sheep'** Martin Wing (10)
Falconbrook Junior Girls' School London SW11

194 **'Abstract Pattern'** Pat Wise (9)
Cotham Grammar School Bristol 6

195 **'The Birth of Jesus'** Group Work* (8)
Halffield Junior Mixed School London W2

196 **'The Four Jokers'** Group Work* (9-11)
Lea Farm Primary School Watford Herts

197 **'Village on the Blackwater'** Group Work (8-11)
Tollesbury County Primary School Maldon Essex

* Special Frieze Award

Ages 12-14 Highly commended

198 **'Grass'** Norma Bradley (13)
Bexley Westwood County Secondary School for Girls Kent

199 **'Wheel'** Jean Davie (13)
The Heathcote School Stevenage Herts

200 **'Still Life'** Christopher Hallett (13)
Knighthole County Secondary School Wales

201 **'Resting'** Elizabeth Hill (14)
St George's Road School Glasgow Scotland

Commended

202 **'Composition in Tissue'** Susan Bradley (13)
Sidcot School Winscombe Somerset

203 **'Still Life from Imagination'** Jean Chesworth (13)
Grange Secondary Modern School for Girls London W5

204 **'Bark'** Brenda Emerson (14)
Southaw Girls' School London N20

205 **'Still Life'** Duncan McIntyre (12)
St George's Road School Glasgow Scotland

206 **'The School Hall'** David Peacock (14)
Erith Technical School Basley Kent

207 **'London Sky Line Sketched from the Monument'** Geoffrey Sills (14)
Brookehouse School London E5

Accepted

208 **'The Pheasant'** Terry Acreman (13)
Frederick Bird Secondary Modern Boys School Coventry Works

209 **'Station'** Peter Atkinson (13)
Stourbridge Secondary Art School Worcs

210 **'A Watery Scene'** Margaret Bagguley (13)
Nottingham High School for Girls Notts

211 **'A Weed'** Susan Bamber (13)
Northwich Grammar School for Girls Cheshire

212 **'Chair Still Life'** Berek Barber (12)
Spencefield Secondary School Leics

213 **'The Tree'** Clive Barnes (12)
Cotham Grammar School Bristol 6

214 **'Pylons'** Morris Birney (12)
Mundella Secondary Modern Boys' School Leics

215 **'Signal Levers, Humberstone Signal Box'** Morris Birley (12)
Mundella Secondary Modern Boys' School Leics

216 **'Unloading'** George Bollington (14)
St Helier Boys' School Jersey CI

217 **'Milkman'** Kenneth Brown (13)
The Heathcote School Stevenage Herts

218 **'Bicycle'** Victor Bumpstead (14)
The Heathcote School Stevenage Herts

219 **'An Owl at Night'** Patricia Bushell (13)
Henley Grammar School Oxon

220 **'Bottles'** Sandra Calveley (13)
Baxley Westwood County Secondary School for Girls Kent

221 **'Canal Longport'** Keith Carnall (14)
Highgate County Secondary School Staffs

222 **'The Unexplored'** Paul Challis (12)
Leggatts Way Boys' School Watford Herts

223 **'Leaves'** George Chalmers (13)
St George's Road School Glasgow Scotland

224 **'The Salvation Army'** Carol Chapman (14)
Fair Oak Secondary Girls' School Newport Wales

225 **'Still Life'** David Clark (12)
Cray Valley Technical School Sidcup Kent

226 **'Men at Work'** Peter Clark (14)
Wednesfield Grammar Tech School Staffs

227 **'Canal Bridge'** Roy Clay (14)
Portland House School Staffs

228 **'Factory'** Eric Clayton (14)
W R Witleyway Secondary School Walsall Staffs

(below) 94 'Dinner' Maurice Cluff (9)



(right) 97 'Lady' Ruth Spain (10)



- 229 'Old Cottage' Derek Clifton (14)
Windmill Secondary School Deddington Oxon
- 230 'The Farm' Pamela Connelly (12)
St Roch's Secondary School Glasgow Scotland
- 231 'A Chair' Stephen Cooper (14)
St Birinus School Didcot Berks
- 232 'Portrait of my Friend' William Corke (12)
Homewood County Secondary School Tenterden Kent
- 233 'Yellow Flowers' Michael Crampton (12)
St Stephen's RC Secondary Modern School Kent
- 234 'Portrait of Brenda Bennetts' Hilary Curgenvin (12)
Truro County Secondary Girls' School Cornwall
- 235 'Egyptian Soldier' Barry Curtis (14)
Sproston Secondary School Norfolk
- 236 'Railway Forecourt' Elizabeth Davies (14)
Monks Park Comprehensive School Bristol
- 237 'Back Yards' Janet Dobner (14)
Warren Wood Girls' County Secondary School Kent
- 238 'At the Coal Face' Dillys Douthwaite (14)
Balby Secondary Girls' School Yorks
- 239 'The Abbey' Peter Duffy (12)
Our Lady's High School Motherwell Scotland
- 240 'Tree in a Landscape' Michael Dunk (13)
St Audrey's Secondary Modern School Herts
- 241 'Pylons' Kenneth Fearn (13)
Mundella Secondary Modern Boys' School Leics
- 242 'Factories' Michael Ferns (14)
W R Wileway Secondary School Walsall Staffs
- 243 'Pylons' Geoffrey Fowle (12)
Mundella Secondary Modern Boys' School Leics
- 244 'Morning Hymns' Linda Gascoine (13)
Sutton Common County Secondary School Surrey
- 245 'The Graveyard' Pat Gray (12)
Our Lady's High School Motherwell Scotland
- 246 'Autumn on the Farm' Richard Green (14)
St Helena County Secondary School for Boys Essex
- 247 'Showers' Christine Hall (13)
Lea Mason Secondary Modern School Birmingham Warks
- 248 'The Classroom' James Haxton (14)
Riverside Secondary School Glasgow Scotland
- 249 'Arrangement of Flowers' Michael Hedges (13)
Quaries Boys' School Romford Essex
- 250 'Girl in Blue' Elizabeth Hill (14)
St George's Road School Glasgow Scotland
- 251 'Boy in Red' Elizabeth Hill (14)
St George's Road School Glasgow Scotland
- 252 'Life Paintings' George Hill (13)
Alder School London N2
- 253 'Allotments' Heather Holden (14)
Haslingden Grammar School Rossendale Lancs
- 254 'Still Life' David Horne (13)
St James Secondary Modern School Weybridge Surrey
- 255 'The Onlookers' Jennifer Hugman (12)
Spring Grove Central School Isleworth Middx
- 256 'The Infant School' William Hutty (14)
Churchill School Westerham Kent
- 257 'Vase of Flowers' Rosemary Izzett (12)
Cromhurst School Croydon Surrey
- 258 'A Flint Rock' Peter Johnson (12)
The Margaret Tabor School Braintree Essex
- 259 'Standing Woman' Josephine Jordan (13)
Chapel End Secondary School London E17
- 260 'A Boy Leaning on a Table' David Jupp (13)
Banstead County Secondary Boys' School Surrey
- 261 'Swings' James Kelly (14)
St Roch's Secondary School Glasgow Scotland
- 262 'Boy with Stags Head' Rodney Kimber (14)
Maldstone Technical School for Boys Kent
- 263 'The Band' John Laidlow (14)
St Cuthbert's Secondary School Glasgow Scotland
- 264 'The Fire Fighters' Michael Lepage (12)
Normanton Grammar School Yorks
- 265 'Roofs' Susan Leader (12)
Barnsbury Girls' Secondary School London N1
- 266 'Work' Roy Lees (14)
W. R. Wheavey Secondary School Walsall Staffs
- 267 'House Near School' John Lycett (14)
W. R. Wheavey Secondary School Walsall Staffs
- 268 'Trees in the Yard' Brian Lynne (13)
Orleans County Secondary Mixed School Middx
- 269 'Man in Armour' Ambrose McAtear (13)
St Cuthbert's Secondary School Glasgow Scotland
- 270 'Everest' Mary McComish (12)
Burton-on-Trent School of Art Staffs
- 271 'The School Garden' Sheila McKay (14)
St Ursula's Convent School London SE10
- 272 'Old Houses' Edward McLaughlin (14)
Our Lady's High School Motherwell Scotland
- 273 'Girl with an Umbrella' Moira Milligan (14)
Albert Secondary School Glasgow Scotland
- 274 'Trees' Ronald Misseldine (14)
Orleans County Secondary Mixed School Middx
- 275 'The Village' Anna Morrison (13)
St Roch's Secondary School Glasgow Scotland
- 276 'Storks by a Pond' Ian Mountford (12)
Hill Top Modern School Doncaster Yorks
- 277 'View of Staits' David Molholland (14)
Victoria Secondary Modern Boys' School Yorks
- 278 'Portrait of the Reader' Lawrence Neil (13)
St Cuthbert's Secondary School Glasgow Scotland
- 279 'Bottles' Lawrence Neil (13)
St Cuthbert's Secondary School Glasgow Scotland
- 280 'Boys with a Bird' Terry Neish (13)
The Heathcote School Stevenage Herts
- 281 'Illustration to De La Mares Poem "Silver"' Ann Patrick (14)
Westcliff High School for Girls Essex
- 282 'Old Motherwell' Charles Pinkowski (14)
Our Lady's High School Motherwell Scotland
- 283 'Houses' Diana Poole (14)
Maldstone College of Art Kent
- 284 'Landscape' Garth Porter (12)
St Birinus School Didcot Berks
- 285 'Still Life' Stuart Poulter (13)
Maldstone Technical School for Boys Kent
- 286 'Tree' Michael Priest (13)
Cotham Grammar School Bristol 6
- 287 'Experimental Perspective' Philip Ranson (12)
North Romford Comprehensive School Essex
- 288 'Back Streets' Allan Ratcliffe (13)
Haslingden Grammar School Rossendale Lancs
- 289 'The Battle of Gravelotte' Richard Scollins (14)
Ilkeston Darbys
- 290 'The Deserted Beach' Sheila Sims (13)
Southaw Girls' School London N20
- 291 'The Elephant Trainer' Ajit Singh (14)
Frederick Bird Secondary Modern Boys' School Warwick
- 292 'Portrait of a Friend' Brian Slark (12)
Maldstone Technical School for Boys Kent
- 293 'Mr Robinson's Bike' Gordon Smith (13)
St Birinus School Didcot Berks
- 294 'The Harbour Meragissey Cornwall' Graham Smith (13)
Jones' West Monmouth Grammar School Pontypool Wales
- 295 'Tresant Polypool' Graham Smith (13)
Jones' West Monmouth Grammar School Pontypool Wales
- 296 'Teddy Boys Waiting' Julia Smith (14)
Four Dwellings Girls Secondary School B.Ham
- 297 'Lookout Tower' Peter Sparrey (12)
James Mackinlay School Redcar Yorks
- 298 'A Scene at the Cattle Market' Christine Spurlock (13)
Truro County Grammar School Cornwall
- 299 'The Farmhouse' Patricia Strachan (14)
Chelmsford County Technical School Essex
- 300 'The Pavement Artist' Michael Stringer (14)
Frederick Bird Secondary Modern Boys' School Warwick
- 301 'A Corner of the School Garden' Charlotte Summers (14)
Channing School London N6
- 302 'Diving Seagulls' Isobel Tarshis (13)
Cophall County School London NW3
- 303 'Pylons' Andrew Thomas (12)
Mundella Secondary Modern Boys School Leics
- 304 'Potworks Stoke-on-Trent' Gary Tunnicliffe (12)
Highgate County Secondary School Staffs
- 305 'A Building Site' Peter Webster (13)
Plaistow London E13
- 306 'Landscape' Robert Whan (14)
Imberhorne County Secondary School Sussex
- 307 'The Bandsman' Billy Wilcox (14)
Frederick Bird Secondary Modern Boys' School Leics
- 308 'Industrial Landscape' Lesley Wilkes (14)
Stourbridge Secondary Art School Worcs
- 309 'Boy in the Bee Hat' Linda Williams (13)
The Heathcote School Stevenage Herts
- 310 'Potworks Tunstall' Colin Wishaw (12)
Highgate County Secondary School Staffs
- 311 'In Trafalgar Square' Marie Wilson (12)
Cardinal Manning Girls' Secondary School London W10
- 312 'Sunflower' David Wood (12)
The Heathcote School Stevenage Herts
- 313 'Landscape with Bushes & Hills' June Woods (12)
Millicase Secondary Modern School Hants
- 314 'Still Life' John Woolley (13)
Mundella Secondary Modern Boys' School Leics
- 315 'Rough Winters Day' Catherine Worth (13) Kay Thomas (13)
Truro County Secondary Girls' School Cornwall
- 316 'The Herring Curers' William Young (13)
St Cuthbert's Secondary School Glasgow Scotland
- 317 'Wedding Group' Group Work* (14)
Channing School London N6
- 318 'Hell' Group Work (12-14)
Heles School Exeter Devon
- 319 'Birds' Group Work (12-13)
Litcham Area School King's Lynn Norfolk
- 320 'Our Birmingham' Group Work (14)
Lordswood Boys' Technical School B.Ham
- * Special Frieze Award



328 "Transport Cafe Moss Side" Peter Riley (16)

Ages 15-16

The Sunday Pictorial £300 Art Training Award

This year John Cressor and Peter Riley were each awarded £300.

John Cressor of Middlesbrough College of Art, Yorks who is 16 years old

- 321 'Fairground'
- 322 'Four Drawings'
- 323 'Life Drawing'
- 324 'Mother & Child'
- 325 'Muscle Beach'
- 326 'Sea Scape'

Peter Riley of Oldham Lanca who is also 16 years old

- 327 'Redundant Cotton Mill Crown Street'
- 328 'Transport Cafe Moss Side'
- 329 'Trolley-Bus Wires'
- 330 'Two Spinning Mills and Footballers'
- 331 'Waterloo Terrace, Marlborough Street'

Highly commended

- 332 'Portrait' Susan Fry (15)
The Hall School Wincanton Somerset
- 333 'Movement' David Pickersgill (16)
Gloucestershire College of Art Glos
- 334 'Landscape' Nigel Sutton (16)
Gloucestershire College of Art Glos

Commended

- 335 'My Fight against the Forces of Evil' Charles Lee (16)
Kings School Glos
- 336 'Bicycle Shed' Geoffrey Tanner (16)
St Birinus School Didcot Berks
- 337 'Neglected Allotment' Geoffrey Vivis (16)
High Wycombe School of Art Bucks

Accepted

- 338 'Eagles' Terry Bauman (15)
North Paddington School London W9
- 339 'The Procession' David Borwell (16)
Middlesbrough College of Art Yorks
- 340 'Boats' Anne Bradley (16)
Sidcot School Winscombe Somerset
- 341 'Erl & Jose' Anne Bradley (16)
Sidcot School Winscombe Somerset
- 342 'Life at Sea' Malcolm Coates (15)
Westborough Secondary School Maidstone Kent

- 343 'The Croal Valley' Trevor Colloney (15)
Botton College of Art Lancs
- 344 'Backyards' Robert Cooper (16)
Highfields County Secondary School Staffs
- 345 'Backyards' Richard Dack (16)
Lowestoft School of Art Suffolk
- 346 'Horses in Twilight' Annette Dufield (15)
Maidenhead High School Bucks
- 347 'Snow Scene' Rosemary Evans (15)
Midhurst County Secondary School Sussex
- 348 'Portrait of a Boy' Michael Fletcher (15)
Gravesend School of Art Kent
- 349 'Mother' Michael Gilbert (16)
Jones' West Monmouth Grammar School Pontypool Wales
- 350 'Composition No. 1 Abstract' Caroline Gobell (15)
Sidcot School Winscombe Somerset
- 351 'Race Riot' Simon Griffey (15)
Sevenoaks School Kent
- 352 'Progression' Susan Hale (16)
Gloucestershire College of Art Glos
- 353 'Forests' Margaret Halliday (15)
Burton-on-Trent Technical School Staffs
- 354 'Tree in the Park' Leslie Hare (15)
Southaw Girls School London N20
- 355 'Welsh Landscape' Anthony Jones (16)
Glamorgan Wales
- 356 'Still Life' John Knight (16)
Gloucestershire College of Art Glos
- 357 'Landscape' Anne Lee-Millward (16)
Gloucestershire College of Art Glos
- 358 'The Quarry' Ivor Lewis (15)
Nuneaton Warwicks
- 359 'No Entry' Malcolm Love (16)
Wimbledon School of Art London SW10
- 360 'Jane' John Middleton (15)
Coleraine Technical School N. Ireland
- 361 'Alison' John Middleton (15)
Coleraine Technical School N. Ireland
- 362 'Composition in Blue' Judith Naylor (16)
Sidcot School Winscombe Somerset
- 363 'The 8.33 am' David Nicholls (16)
Highfields County Secondary School Staffs
- 364 'Rush Hour' David Nicholls (16)
Highfields County Secondary School Staffs
- 365 'Resting' Jill Parsons (16)
Southaw Girls' School London N20
- 366 'Christmas Still Life' Robert Sampson (15)
Sevenoaks School Kent

- 367 'Seen from a Hill' Nigel Spencer (16)
Gloucestershire College of Art Glos
- 368 'Portrait of a Boy' Peter Sylveire (15)
Christopher Wren School London W12
- 369 'Bread' Susan Taylor (16)
Gloucestershire College of Art Glos
- 370 'The Log' Susan Waller (15)
Southaw Girls School London N20
- 371 'Houses' Denise Wilcombe (16)
Clifton High School Bristol
- 372 'The Cabbage Field' Jeanne Woodcraft (16)
Gravesend School of Art Kent



201 'Resting' Elizabeth Hill (14)

(below) 325 'Muscle Beach' John Cressor (16)



(right) 202 'Composition in Tissue' Susan Bradley (13)



sculpture

The challenge of the third dimension Construction Carving Modelling

This year the whole of our Craft Section is devoted to SCULPTURE.

The children have used many different materials—the conventional and well-tried, as well as the more unusual.

A tremendous amount of sculpture was submitted and we have tried, by careful selection, to show the great wealth and variety being made by children today. Our unanimous and special approval is indicated by commendations and money awards. We found, as we expected to find, reflections and echoes of all styles. There are all shades, from the naturalistic to the abstract, from the simple to the complicated, from the formal to the extravagant, from the realistic to the fantastic, from the conventional to the experimental. This is how it should be.

Almost everyone can recognise drawings and paintings by children. In any house, where a child lives, evidence abounds of the preoccupation with graphic representation. Look in any school or on almost any pavement! But this is only one side of their creative output. Here is evidence of the other, less familiar, side.

Activities, such as modelling in clay, hacking away at a piece of wood with a pen-knife, carving from soft chalk or plaster, or building a construction from various materials, are natural to children and represent a development from earlier enthusiasms for wooden bricks, mud-pies, sand castles and snow-men.

Some children certainly do not seem to have a gift for drawing. There appears to be a division of gifts into PICTORIAL, GEOMETRIC, and

SCULPTURAL. These become apparent in children at quite an early age. Those with pronounced pictorial aptitudes will be happier working on the flat. The 'geometric' types tend to work better in the field of design, patterns, and in some crafts. Those whose sculptural sense is strong will show a better grasp in the third dimension. This division of talents would seem to be natural and altogether desirable. All divisions must be catered for in our art education programmes. But the sculptural side has been to a large extent overshadowed and overlooked—and consequently, the development of the power of plastic expression has been neglected. Yet in many children the touch images are as vividly felt as the visual images. A considerable impoverishment of the artistic responses results from the lack of opportunity to work 'in the round'.

With very young children it is not easy to see where play ends and art begins. The element of pure pleasure in manipulating sand, mud, water and clay, overrides all other considerations. These materials allow the child to explore the world by touch and actual practical experiment—he makes something and then, just as happily destroys it. That there are not many pieces shown here from children aged FIVE to SEVEN, indicates the impermanence of their work—the concentration on activity rather than on results. Children at nursery and infant schools usually take home their objects on completion—a custom most appropriate at this stage.

During the EIGHT to ELEVEN period, there is no lack of interest or enthusiasm for three-

dimensional work. The main difficulties are those caused by oversized classes and problems of clearing up the mess after lessons.

But what about the final bridge from childhood to maturity? Should we expect works of beauty from adolescents? After all, this is not the happiest stage of life. Yet it is precisely from these older children that the most beautiful work in our display has come. A remarkable number of pieces in the ELEVEN to SIXTEEN age range have the aesthetic qualities of genuine works of art. Some would hold their own in much grander company. A few would not look out of place in a museum collection of folk-art. At least a dozen I should be delighted to own myself.

Undoubtedly we have here one answer to the problems of easing secondary school children through that critical period when interest in painting may wane—when many develop too intense a critical awareness towards their graphic work. They should do more sculpture and less painting. For far too many people, art merely means pictures. But like rainbow colours the arts merge into each other. SCULPTURE in the near future, may well cease to occupy the fringe position which it now holds in public esteem. If so, much credit will be due to the pioneering work done by those teachers who, giving the essential stimulus and creating the crucial atmosphere in class or art-room, let their children loose to experiment in the challenging third dimension.

ERIC AUSTEN, Teacher.

NOTE: The pieces are not displayed in separate age groups. Each stand shows a mixture. The colour of the number indicates the age group:
Pink 5-7
Blue 8-11
Yellow 12-14
Red 15-16



The Following nine schools have received awards:

Rhodesway Secondary School Allerton Yorks
Quarles County Secondary Boys' School Romford Essex
Hallfield Junior Mixed School London W2
The Howard School Welwyn Garden City Herts
Aberdeen Grammar School Scotland
Northfield Secondary School Aberdeen Scotland
Townmead Secondary School West Drayton Middx
Horley's Green Residential Secondary Modern School Bucks
Goucestershire College of Art Glos

Ages 5-7

- 373 'Angel' Papier Mache Christine Agius (5)
Yerbury Infant School London N19
- 374 'Jan' Wood Wire & Beads Elaine Boothman (7)
Spring Bank County Infants' School Leeds Yorks
- 375 'I can curl myself Up' Clay Janet Boothman (7)
Spring Bank County Infants' School Leeds Yorks
- 376 'Paper Boy' Papier Mache Patricia Boothman (7)
Spring Bank County Infants' School Leeds Yorks
- 377 'Clown Mask' Papier Mache Alan Crawford (7)
Barnfield Primary School Edgware Middx
- 378 'Bunny' Lump Salt Paper & Wire Linda Devereaux (7)
Crown Lane Primary School London SW16
- 379 'Octopus' Papier Mache Jill Esten (5)
Yerbury Infant School London N19
- 380 'Man in Canoe' Papier Mache & Sawdust Stephen Flowers (5)
Connaught Road Infants' School Hove 3 Sussex
- 381 'A Goats Head' Bark of Tree & Wire Adrian Henriques (6)
Spring Bank County Infants' School Leeds 6 Yorks
- 382 'Pterodactyl' Balsa Wood Adrian Henriques (6)
Spring Bank County Infants' School Leeds 6 Yorks
- 383 'Snooze' Clay Rebecca Lisle (6)
Spring Bank County Infants' School Leeds 6 Yorks
- 384 'Tin Tail' Corrugated Tin Bark Rebecca Lisle (6) Alison Dalwood (7)
Spring Bank County Infants' School Leeds 6 Yorks
- 385 'Elephant' Papier Mache Patrick Lumley (5)
Yerbury Infant School London N19
- 386 'Peter the Clown' Clay Christine Lygo (5)
Ambler (Finsbury Park) Infant School London N4
- 387 'Ashtray' Papier Mache Trudie Marks (5)
Connaught Road Infants' School Hove 3 Sussex
- 388 'Pin Tray' Papier Mache Christine Miles (5)
Connaught Road Infants' School Hove 3 Sussex
- 389 'The Bull' Terra Cotta Peter Morry (7)
Botlocks Heath County Primary School Hants
- 390 'Little Grey Donkey' Papier Mache Diane Muttock (7)
Galleywall Infant School London SE16

- 391 'Owl Mask' Papier Mache Robert Seddon (7)
Barnfield Primary School Edgware Middx
- 392 'St George & the Dragon' Clay Daniel Simmons (7)
George Eliot Infant School London NW8
- 393 'Red Rocket' Wood Daniel Simmons (7)
George Eliot Infant School London NW8
- 394 'Wolf in his Den' Clay Danuta Tobiaz (7)
Spring Bank County Infants' School Leeds 6 Yorks
- 395 'Fish Swimming' Clay Irena Tobiaz (7)
Spring Bank County Infants' School Leeds 6 Yorks
- 396 'Mask' Papier Mache David Twymon (7)
Rutland Primary School London E1
- 397 'Giraffe' Papier Mache Amanda Wade (5)
Connaught Road Infants' School Hove 3 Sussex
- 398 'Camel' Papier Mache Group Work (6)
Yerbury Infant School London N19

Ages 8-11

- 399 'Mask' Papier Mache Joanna Abrahams (11)
Crouch End High School London N6
- 400 'Man's Head' Plaster Philip Ashdown (11)
Hallfield Junior Mixed School London W2
- 401 'Black Pawn (Male)' Clay Gea Austen (9)
Hallfield Junior Mixed School London W2
- 402 'Black Pawn (Female)' Clay Gea Austen (9)
Hallfield Junior Mixed School London W2
- 403 'Camel' Papier Mache Ruth Aylett (9)
Granard Junior Mixed Primary School London SW15
- 404 'Queen' Clay Maxine Barnesley (10)
Hallfield Junior Mixed School London W2
- 405 'Black King' Clay Peter Berry (9)
Hallfield Junior Mixed School London W2
- 406 'Head' Concrete John Bingham (11)
Braunstone Hall Junior School Leics
- 407 'Tortoise' Papier Mache Linda Boothman (10)
Granard Junior Mixed Primary School London SW15
- 408 'Face' Sandstone Thomas Cane (10)
John Ruskin Junior Mixed School London SE5
- 409 'Camel' Papier Mache Barry Carter (9)
Rutland Primary School London E1
- 410 'Snake Charmer' Clay Anthony Casey (8)
Hallfield Junior Mixed School London W2
- 411 'Boxes' Papier Mache Andros Charalambous (8)
Rutland Primary School London E1
- 412 'Moon Guinea Pig' Plaster of Paris Janet Colton (9)
Richard Atkins Junior Girls School London SW2
- 413 'Mask' Clay Peter Conley (10)
Rathfern Road Primary School London E6

- 414 'Robot' Plaster Philip Coltingham (11)
John Ruskin Junior Mixed School London SE5
- 415 'Pre-historic Man' Slate Ronald Cox (11)
Ladybarn Secondary School Manchester Lancs
- 416 'Head' Limestone Brian Deane (10)
Braunstone Hall Junior School Leics
- 417 'Huckleberry' Chalk Peter Dew (11)
Send Church of England School Surrey
- 418 'Sitting Bird' Terra Cotta Jean Farrer (8)
Hallfield Junior Mixed School London W2
- 419 'Black Castle' Clay Martin Gibbons (10)
Hallfield Junior Mixed School London W2
- 420 'White Castle' Clay Martin Gibbons (10)
Hallfield Junior Mixed School London W2
- 421 'Head' Chalk Brian Gillespie (10)
Beckford Junior Mixed School London NW6
- 422 'White Bishop' Clay Sonia Gillespie (10)
Hallfield Junior Mixed School London W2
- 423 'Black Bishop' Clay Sonia Gillespie (10)
Hallfield Junior Mixed School London W2
- 424 'Horse's Head' Chalk Michael Hackworth (11)
John Ruskin Junior Mixed School London SE5
- 425 'White Pawn (Male)' Clay Margaret Harris (9)
Hallfield Junior Mixed School London W2
- 426 'White Pawn (Female)' Clay Margaret Harris (9)
Hallfield Junior Mixed School London W2
- 427 'Circus Lady on a Horse' Terra Cotta Margaret Hodges (10)
Gillian Phillips (9) Sunny Hill School Bruton Somerset
- 428 'Knight on Horse (Black)' Clay Mark Hughes (10)
Hallfield Junior Mixed School London W2
- 429 'Knight on Horse (White)' Clay Mark Hughes (10)
Hallfield Junior Mixed School London W2
- 430 'Panda' Clay David Hurkett (10)
Rathfern Road Primary School London SE6
- 431 'Flatfish' Slate Alvin Irving (11)
Ladybarn Secondary School Manchester Lancs
- 432 'Kitten' Clay Helen Kestley (8)
Rathfern Road Primary School London SE5
- 433 'Kneeling Knight (Black)' Clay Timothy King (9)
Hallfield Junior Mixed School London W2
- 434 'Kneeling Knight (White)' Clay Timothy King (9)
Hallfield Junior Mixed School London W2
- 435 'A Swan & Baby' Terra Cotta Janet Lees (8)
Hallfield Junior Mixed School London W2
- 436 'Lady with Crossed Arms' Terra Cotta Janet Lees (8)
Hallfield Junior Mixed School London W2
- 437 'Snake Charmer' Clay Janet Lees (8)
Hallfield Junior Mixed School London W2

- 438 'A King' Yellow Wood Peter Lucarotti (10)
Ealing London W5
- 439 'A King' Green Wood Peter Lucarotti (10)
Ealing London W5
- 440 'A King' Red Wood Peter Lucarotti (10)
Ealing London W5
- 441 'Owl' Sandstone James Mason (10)
John Ruskin Junior Mixed School London SE5
- 442 'White King' Clay Fergus McClelland (10)
Hallfield Junior Mixed School London W2
- 443 'Mexican Pete' Terra Cotta Fergus McClelland (10)
Hallfield Junior Mixed School London W2
- 444 'A Green Model' Soap Evan McHale (11)
Hallfield Junior Mixed School London W2
- 445 'Lady' Felt, Papier Mache & Wire Cherry Nymon (8)
Rutland Primary School London E1
- 446 'Head' Chalk Richard Olive (11)
Beckford Junior Mixed School London NW6
- 447 'Man's Head' Plaster Constandinos Patsalos (11)
Hallfield Junior Mixed School London W2
- 448 'Alligator' Terra Cotta Raymond Peverall (10)
Rathfern Road Primary School London SE5
- 449 'The Puppy Dog' Plaster & Wire Robin Porter (10)
Biggleswade Controlled Voluntary Primary School Beds
- 450 'An Aeroplane' Papier Mache David Pratchett (9)
Barnfield Primary School Edgware Middx
- 451 'Female Head' Slate Brian Prime (11)
Ladybarn Secondary School Manchester Lancs
- 452 'Alligator' Clay Roy Reynolds (10)
Rathfern Road Primary School London SE6
- 453 'Lady' Papier Mache & Wire Susan Sayers (9)
Rutland Primary School London E1
- 454 'A Mexican on a Horse' Terra Cotta Zarko Slatinas (8)
Hallfield Junior Mixed School London W2
- 455 'Ghost Mask' Papier Mache Anthony Sprattley (8)
Barnfield Primary School Edgware Middx
- 456 'Wild Boar' Slate Eric Swire (11)
Ladybarn Secondary School Manchester Lancs
- 457 'The Snake Charmer' Clay Janet Taylor (8)
Hallfield Junior Mixed School London W2
- 458 'Knight on Horseback' Match Boxes & Balsa Wood Michael Ticheler (10)
Mark Hughes (10) Hallfield Junior Mixed School London W2
- 459 'Brown Owl' Terra Cotta Molya Turner (8)
Hallfield Junior Mixed School London W2
- 460 'Virgin Mary' Clay Clare Vallotton (9)
Crown Lane Primary School London SW16
- 461 'Queen (Black)' Clay Emily Young (10)
Hallfield Junior Mixed School London W2

- 462 'Man's Head' Plaster Alan Zenthon (10)
Hallfield Junior Mixed School London W2
- 463 'A Two Faced Head' Soap Alan Zenthon (10)
Hallfield Junior Mixed School London W2

Ages 12-14

- 464 'Whale' Wood Patricia Bateman (14)
Plympton County Secondary School Devon
- 465 'Warrior's Head' Wood Edward Bellion (13)
Townmead Secondary School West Drayton Middx
- 466 'Fetish' Wood Leslie Bird (12)
Townmead Secondary School West Drayton Middx
- 467 'Chicken' Clay Richard Blackaby (13)
Heathcote School Stevenage Herts
- 468 'Tin Reflex' Tin & Solder Malcolm Braithwaite (14)
Leeds College of Art Leeds Yorks
- 469 'Clown' Terra Cotta Kenneth Brealey (12) Derek Poore (12)
Robert Hart (12) Ronald Vincent (12)
Henry Harbin Secondary Boys' School Poole Dorset
- 470 'Owl' Stone Peter Brown (14)
Sproston Secondary Modern School Norfolk
- 471 'Pre-historic Animal' Slate Ian Causton (13)
Ladybarn Secondary School Manchester Lancs

- 472 'Fish' Slate Kenneth Christmas (13)
Ladybarn Secondary School Manchester Lancs
- 473 'Money-box Pig' Terra Cotta Zeno Colocassis (13)
William Grimshaw School London N10
- 474 'Small Angel' Terra Cotta Margaret Crudginton (12) Wendy Dean (11)
Christine Attewood (11) Deborah Goodman (12)
Chelmsford County Technical School Chelmsford Essex
- 475 'Rhinoceros' Slate John Davies (13)
Ladybarn Secondary School Manchester Lancs
- 476 'Figure of a Woman' Terra Cotta Brenda Dinsdale (14)
Vauxhall Manor Secondary Girls School London SE11
- 477 'Head of a Girl' Chalk Lynda Dodd (14)
Hammermith County School London W12
- 478 'Mask' Plaster John Gibbs (13)
Quarles Boys' School Romford Essex
- 479 'On the Beach' Paper & Wire Derek Harnes (14)
Gaynes County Secondary School Upminster Essex
- 480 'Queen' Terra Cotta Peter Harper (14)
Quarles Boys' School Romford Essex
- 481 'Dachshund' Clay Anne Hastings (14)
Wolverhampton Technical High School Staffs
- 482 'Totem Pole Chief' Wood & Wire Lesley Heed (14)
Mill End Boys' School High Wycombe Bucks
- 483 'Panther' Wood Terence Hewitt (14)
Faversham County Secondary School Faversham Kent



443 'Mexican Pete' Terra Cotta Fergus McColland (10)

- 484 'Head' Alabaster Derek Hough (14)
Horsley's Green School High Wycombe Bucks
- 485 'Pin Picture' Fish Cloth & Pins Julia Hughes (12)
Bexley Westwood County Secondary Girls School Kent
- 486 'Head' Plaster John James (12)
Quarles Boys' School Romford Essex
- 487 'Decorated Tile' Clay Colin Jebb (13)
Cavendish County Secondary School Eastbourne Sussex
- 488 'Running Rabbit' Wood Allan Kelly (14)
Breckfield Secondary Modern School Liverpool Lancs
- 489 'Queen' Terra Cotta Roger King (13)
Quarles Boys' School Romford Essex
- 490 'Head' Plaster Edward Lacey (13)
Quarles Boys' School Romford Essex
- 491 'Kneeling Figure' Alabaster Rodney Lomas (13)
Horsley's Green School High Wycombe Bucks
- 492 'Cowboy' Wood John Low (14)
Aberdeen Grammar School Aberdeen Scotland
- 493 'Horse' Terra Cotta Moira Macdonald (14)
Northfield Secondary School Aberdeen Scotland
- 494 'Bear' Perspex Allen Macoy (13)
Breckfield Secondary Modern School Liverpool Lancs
- 495 'Horse' Slate Brian McDermott (12)
Ladybarn Secondary School Manchester Lancs

- 496 'Mask' Plaster Steven McHugh (12)
Quarles Boys' School Romford Essex
- 497 'Mask' Plaster Robert Miller (12)
Quarles Boys' School Romford Essex
- 498 'Doubtful Head' Wood David Morgan (12)
Townmead Secondary School West Drayton Middx
- 499 'Fish Descending' Plaster Linda Mundy (12)
Townmead Secondary School West Drayton Middx
- 500 'Boy Standing' Wood Paul Nev (13)
Ladybarn Secondary School Manchester Lancs
- 501 'Bear' Clay Richard Pattenden (12)
Cavendish County Secondary School Eastbourne Sussex
- 502 'Cat' Cement Fondou Joan Pilgrim (14)
Coronation Secondary School Pembroke Wales
- 503 'Head of Man' Plaster Colin Ralton (14)
Ladybarn Secondary School Manchester Lancs
- 504 'Queen' Terra Cotta Barry Ramsey (13)
Quarles Boys' School Romford Essex
- 505 'Tile' Fish Terra Cotta Elizabeth Riordan (14)
Cardinal Manning School London W10
- 506 'Tile' Bird Terra Cotta Mary Riordan (12)
Cardinal Manning School London W10
- 507 'Cat on Tiles' Tin, Wire & Mesh William Robinson (12)
Townmead Secondary School West Drayton Middx



506 'Tile' Bird Terra Cotta Mary Riordan (12)

- 508 'Panel Construction' Cardboard & Wood Alison Ryland (14) Jennifer Higham (14) Sidcot School Winscombe Somerset
- 509 'Acrobats' Terra Cotta Ann Sendall (13) Shirley Bilby (14) Cynthia Wyatt (13) Vauxhall Manor Secondary Girls' School London SE11
- 510 'Head' Alabaster Harold Shaw (13) Horsley's Green School High Wycombe Bucks
- 511 'Head' Plaster Keith Sibley (12) Quarles Boys' School Romford Essex
- 512 'Head' Plaster Steven Skinner (13) Quarles Boys' School Romford Essex
- 513 'Head of Youth' Plaster Barry Smith (14) Ladybarn Secondary School Manchester Lancs
- 514 'Sleeping Lion' Wood Susan Spears (14) Channing School London N6
- 515 'Sheet of Houses' Plaster Relief Margaret Stack (14) Pamela Williams (13) Kathleen Boyes (14) Rhodesway Secondary School Bradford Yorks
- 516 'Cat' Wood Peter Stanley (14) Faversham County Secondary School Faversham Kent

- 517 'Self Portraits' Terra Cotta Jennie Steel (14) Frederick Clarke (14) Ann Newton (13) Rhodesway Secondary School Bradford Yorks
- 518 'Mask' Plaster Thomas Stratton (12) Quarles Boys' School Romford Essex
- 519 'Owl Pot' Clay Kenneth Sweeney (14) Bolton Secondary Art School Bolton Lancs
- 520 'Seal' Alabaster William Turner (14) Horsley's Green School High Wycombe Bucks
- 521 'Rabbit' Gypsum Mervyn Unsworth (14) Burnley Wood County Secondary School Burnley Lancs
- 522 'The Lizards' Gypsum Mervyn Unsworth (14) Burnley Wood County Secondary School Burnley Lancs
- 523 'The Mountaineer' Gypsum Mervyn Unsworth (14) Burnley Wood County Secondary School Burnley Lancs
- 524 'Bird' Mosaic on Plaster David Ward (14) Ladybarn Secondary School Manchester Lancs
- 525 'Head of Refugee' Terra Cotta David Willmore (13) Howard School Welwyn Garden City Herts

- 526 'Knight' Terra Cotta Raeburn Wilson (14) William Grimshaw School London N10
- 527 'Totem Pole' Terra Cotta Raeburn Wilson (14) William Grimshaw School London N10
- 528 'Sleeping Figure' Clay Susan Winterton (14) Sunny Hill School Bruton Somerset
- 529 'The Abominable Snowman' Compressed Paper Terry Woods (12) Abbotsfield County Secondary School Middx
- 530 'Refugee Heads' Plaster Robert Worsley (13) Derek Smith (13) Howard School Welwyn Garden City Herts
- 531 'Mask' Plaster Alan Zetler (13) Quarles Boys' School Romford Essex
- 532 'Knelling Angel' Terra Cotta Group Work (11-12) Chelmsford County Technical School Chelmsford Essex
- 533 'Shepherd' Terra Cotta Group Work (11-12) Chelmsford County Technical School Chelmsford Essex
- 534 'Black Country Buildings' Plaster Group Work (14) Dudley & Staffs Technical College Dudley Worcs
- 535 'The Organ Grinder' Terra Cotta Group Work (12-13) The Howard School Welwyn Garden City Herts
- 536 'Indian Giving War Cry' Wood Group Work (12-14) The Howard School Welwyn Garden City Herts
- 537 'Pillar of Life' Plaster of Paris Group Work (12-14) The Howard School Welwyn Garden City Herts
- 538 'Totem God' Papier Mache Group Work (14) Quarles Boys' School Romford Essex
- 539 'Madonna & Child' Terra Cotta Group Work (14-15) Rhodesway Secondary School Bradford Yorks
- 540 'Roundabout' Metal Group Work (14-15) Rhodesway Secondary School Bradford Yorks

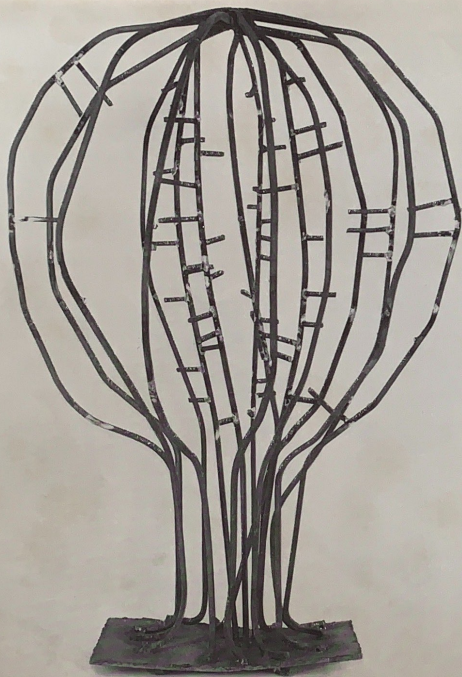
Ages 15-16

- 541 'Figure of a Woman' Terra Cotta Josephine Andrews (15) Vauxhall Manor Secondary Girls' School London SE11
- 542 'Abstract Form' Bath Stone Brendan Atkinson (16) Gloucestershire College of Art Glos
- 543 'Swallow' Cement Heather Barnes (15) Holt Hall Holt Norfolk
- 544 'Wrestlers' Plaster Fred Bowers (15) Leeds College of Art Leeds Yorks
- 545 'Madonna & Child' Slate Patrick Boyle (15) Our Lady's High School Motherwell Scotland
- 546 'Mother & Child' Stone Patricia Budd (15) Sproston Secondary Modern School Norfolk
- 547 'Owl' Wood Robin Cornwall (15) Mill End Boys' School High Wycombe Bucks
- 548 'Sculpture in Pine' Wood Grenville Dalley (15) Sidcot School Winscombe Somerset

- 549 'Twilight' Aluminium Michael Durham (16) Leeds College of Art Leeds Yorks
- 550 'Head' Clay Janet Foster (16) Chelmsford County Technical School Chelmsford Essex
- 551 'Carnivorous Plant' Iron Howard Fry (16) Leeds College of Art Leeds Yorks
- 552 'Hand Sculpture' Wood Susan Hale (16) Gloucestershire College of Art Glos
- 553 'Portrait Head' Cement Fongu Diane Hart (18) Vauxhall Manor Secondary Girls' School London SE11
- 554 'Mother & Child' Bath Stone John Knight (16) Gloucestershire College of Art Glos
- 555 'Head' Marble Anne Lee-Millward (16) Gloucestershire College of Art Glos
- 556 'Country Bumpkins' Terra Cotta Katherine Litchfield (15) Ealing Art School London W3
- 557 'Abstract' Plaster Carole Loeber (15) Northumberland Heath Girls' School Erith Kent
- 558 'Head' Wood Michael Loughlin (15) Sproston Secondary Modern School Norfolk
- 559 'Eskimo' Stone Bernard Lupsom (15) Sproston Secondary Modern School Norfolk
- 560 'Head' Stone Bernard Lupsom (15) Sproston Secondary Modern School Norfolk
- 561 'Cat' Clay Peter Minas (15) William Grimshaw School London N10
- 562 'Boys Wrestling' Plaster Gordon Moritz (16) Christopher Wren School London W12
- 563 'Totem Pole' Terra Cotta Peter Neuner (15) William Grimshaw School London N10
- 564 'Spirit Head' Marble David Pickersgill (16) Gloucestershire College of Art Glos
- 565 'Perseus' Wood Douglas Pecklington (16) Redruth County School for Boys Cornwall
- 566 'Jean' Plaster Janice Rich (15) Malory School Bromley Kent
- 567 'Dog' Plaster & Wire John Shipley (15) Mundella Secondary Modern Boys' School Leics
- 568 'Indian Chief' Wood Alan Stephen (15) Aberdeen Grammar School Aberdeen Scotland
- 569 'Idol' Alabaster Caroline Watson (16) Gloucestershire College of Art Glos



530 'Refugee Heads' Plaster Robert Worsley (13) Derek Smith (13)



551 'Carnivorous Plant' Iron Howard Fry (16)

