

# The Jewish Deaf Association

## Welcome to our new Centre

AFTER many years of planning, fundraising, and construction work, the Jewish Deaf Association has finally moved into the brand new Community Centre in North Finchley which will take provision for deaf and hard of hearing people into the 21st century.

In contrast to the JDA's previous building in Stamford Hill, the £600,000 purpose-built Centre is easily accessible and has been specifically designed so that it can host a wide range of new activities and programmes which until now would have been impossible.

The building, which occupies a corner site between Woodside Park Road and High Road North Finchley, houses the JDA's offices, meeting rooms, an education and computer training centre and a sizeable indoor games room.

The JDA has also created one of London's most advanced Resource and Technology Rooms, where deaf and hard of hearing people can view a display of equipment to help them lead more independent lives at home or at work (see page 2).

The JDA is a totally independent organisation, offering advice, support, counselling and information, as well as social and cultural events for Jewish deaf and hard of hearing people of all ages.

'People frequently ask me whether there is a need for a Jewish Deaf Association,' says Evelyn Gee, Chairman of the JDA, 'and I surprise them by quoting a Department of Health statistic which estimates that *one in seven people in this country suffers from some kind of hearing loss.*

'That means around 40,000 Jewish people could be affected - and we're not just talking about elderly people losing their hearing in old age. There are still many babies born with a hearing impairment and an alarming amount of children and young adults who lose their hearing after severe ear infections or because of genetic diseases.

'Finding out your child is profoundly deaf, or discovering that you, or a member of your family, is losing their hearing can be a bewildering experience. The JDA is there to advise, support and inform people of all ages about deaf issues and the particular problems faced by Jewish deaf people, such as access to religious, social and cultural activities, which hearing people take for granted.'



The Jewish Deaf Association's new Community Centre: taking provision for deaf and hard of hearing people into the 21st century

**JDA**  
 JEWISH DEAF ASSOCIATION

*Supporting all deaf and hard of hearing people*

For further details about the JDA, Tel: 0181 0502 (Voice & Minicom),  
 Tel: 0181 446 0214 (Resource Room, Voice & Minicom & Answerphone), Fax: 0181 445 7451, E-Mail: [jda@dircon.co.uk](mailto:jda@dircon.co.uk)



# A Centre of

## The Name Lives On Your First Point of Contact



Evelyn and George Gee, Chairman and President of the Jewish Deaf Association, stand proudly beside the front door plaque that bears the name of the organisation's founder, Evelyn's father Julius Newman

IT is now almost fifty years since the late Julius J. Newman, whose daughter, Hélène, is hard of hearing, established the Jewish Deaf Association. Hélène's sister and brother-in-law, Evelyn and George Gee, have been heavily involved in the organisation for many years, and are Chairman and President of the JDA respectively.

Evelyn and George are proud of the organisa-

tion's independence and have been largely responsible for raising the funds needed to build and equip the new Centre.

Together with all the JDA's members, they would like to thank the many donors, whose names are too numerous to mention individually, for their generous support and faith in this ambitious project.

## Calling All Volunteers



Some of our youngest fundraisers, the Hampstead Garden Suburb Bat Chayil class, braved an eight-mile sponsored walk through Kenwood, North London, recently, to raise over £1500 for the JDA.

WHERE would we be without our wonderful band of volunteers? Whether it's helping out at our weekly Day Centre, training to work in the Resource and Technology Room, holding fundraising events, or helping with professional advice and training for deaf people, their services are invaluable.

Could you spare a few hours a week to help deaf people in the Jewish Community? Could you use your professional skills to help with fundraising or speaking on topics of particular interest to deaf people? Would you like to set up a fundraising committee in your area, or hold a one-off event to raise money for the JDA?

If so, we'd love to hear from you. Please contact Pat Goldring at the address, phone or fax numbers on the back page and she'll tell you more about opportunities for deaf and hearing volunteers at the JDA.

## Revered Reverend

Reverend Michael Plaskow MBE has worked tirelessly for the Jewish Deaf Association for many years and, as its Honorary Chaplain, is always on hand to advise members on religious or spiritual matters, as well as helping the JDA with its celebrations of Jewish festivals such as Passover and Purim.



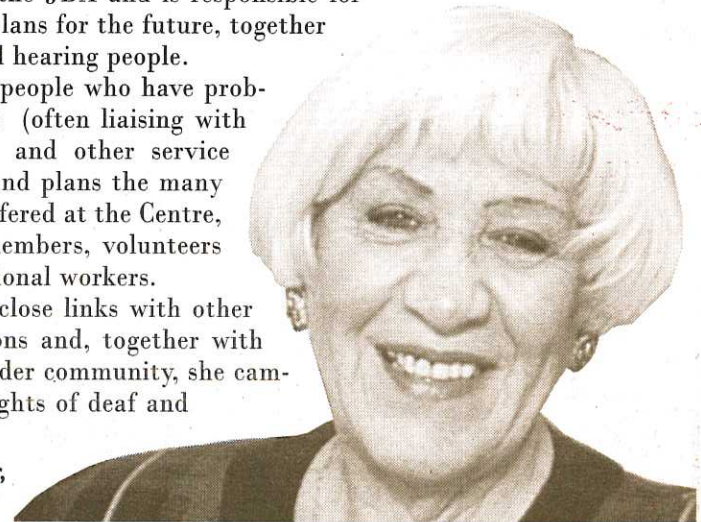
Rev. Michael Plaskow MBE

PAT GOLDRING, Executive Director of the JDA, oversees the day-to-day running of the JDA and is responsible for generating its policies and plans for the future, together with the Council of deaf and hearing people.

She counsels and advises people who have problems concerning deaf issues (often liaising with social service departments and other service providers on their behalf) and plans the many projects and programmes offered at the Centre, in conjunction with deaf members, volunteers and the JDA's other professional workers.

Pat maintains the JDA's close links with other Jewish voluntary associations and, together with deaf organisations in the wider community, she campaigns vigorously for the rights of deaf and hard of hearing people.

The JDA's Executive Director, Pat Goldring



Members of the JDA try out new equipment in the Resource and Technology Room

## A Service to the Whole Community

EQUIPMENT to help deaf and hearing impaired people become more independent in their homes and workplaces has improved by leaps and bounds in the last few years, thanks mainly to new computer technology.

The array of doorbell and phone systems, fire and safety alarms, communications equipment and other aids is growing rapidly and can be confusing, especially for someone encountering deafness for the first time.

Responding to this need, the JDA has created a Resource and Technology Room at the Centre. One of only a handful in London, the Resource Room offers a comprehensive display of technology for hearing impaired people, together with information, support and practical advice from fully-trained co-ordinators on a wide range of matters, from safety and financial problems to dealing with social services.

Because this facility is unique in north London, the JDA has offered the services of the Resource Room to members of the wider community, regardless of their religion. All visits are by appointment only.

For further information about the Resource and Technology Room, or to make an appointment, please contact Helen Rabin on: 0181 446 0214 (voice and minicom) during office hours, or leave a message on the answerphone/minicom.



George Gee (left) demonstrates the wheelchair-capacity lift to a JDA member who attends the weekly Day Centre

## Disabled access for the first time

THE new Centre is fully accessible to disabled people, unlike the previous building which had no lift and excluded people with wheelchairs and large walking aids.



# Excellence

## Activities Six Days a Week

WHETHER it's computer training or sign language classes, snooker or bingo, the new JDA Centre has the space to offer deaf and hearing impaired people of all ages a balanced programme of educational and social courses, clubs and events. Many of the projects and activities are planned and run by the members themselves, and repre-

sentation on the JDA's Council ensures that they have a say in the shaping of future developments at the JDA. New projects are emerging all the time, including a communication club for sign language students to converse with deaf people and a self-help group for tinnitus sufferers.

### Communication by Computer

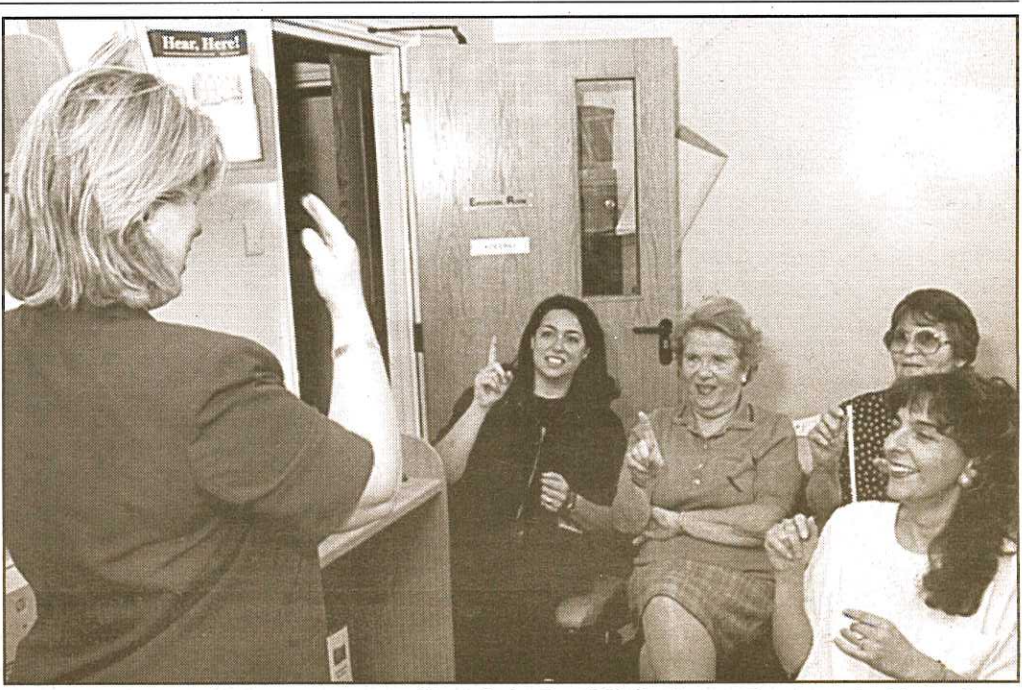


Kay Kaufman demonstrates the newly donated computer system to some of the JDA members

COMPUTERS are an important communication tool for deaf people, especially since the growth of the Internet system. Now, they can not only keep in contact with deaf or hearing friends and family, but they can also use their computer skills to enhance c.v. production and employment prospects. Training is essential, however, and the JDA is preparing to set up programmes to train deaf people to use computers at all levels, starting with beginners' courses. You can find more information about the JDA on its Website (see back page), which will eventually be used by the members as a constantly-updated information page.

### Signing from October

SIGN language courses at all levels have been running for some years under the auspices of the JDA but never before at its own premises, with tutors from its own staff. Kay Kaufman, a profoundly deaf member of the JDA who now works at the Centre as Administrative Assistant to Pat Goldring, is also a qualified British Sign Language tutor. Kay will be taking the Monday afternoon class at the Centre, starting from October (further details on back page). There will also be an evening class, run by Koleinu (see below and overleaf for



The JDA's qualified sign language tutor, will teach the first BSL Beginners Course at the Centre from this October (details on back page)

details), starting this autumn. An important element of the JDA's deaf awareness programme, the year-long courses are broken up into three terms and are open to anyone who wishes to improve their communication skills with deaf people who use sign language.

## Never a Dull Day

THERE'S always something going on at the weekly social club for the JDA's profoundly deaf members. A Kosher meal in the canteen may be followed by a lecture on deaf issues or a visit by an interesting speaker, whose words will be translated into sign language. Afterwards there could be a raffle, bingo, or a game of snooker or darts in the games room.



Members celebrate Miriam Solomon's birthday in the state-of-the-art Kosher canteen at the JDA Centre. Miriam, (centre) offers a tray of chocolate treats to her friends.

The JDA often arranges outings to museums, stately homes, signed theatre performances, and pantomimes. The Day Centre is also a chance for members to meet with Pat to chat about any problems they have concerning deaf issues.



A tour of Wembley Stadium was just one of the summer holiday outings organised for the Koleinu group last year. Others included a trip to Cadbury World and a visit to the Royal Tournament.

### Koleinu finds new home at the JDA Centre

DEAFNESS can affect people of any age; there are still babies born profoundly deaf or with hearing problems and an increasing amount of children who suffer a hearing loss after ear infections or because of inherited conditions. Koleinu (a Hebrew word, meaning our voice) was set up jointly by the Jewish Deaf Association, Norwood Ravenswood and the Association for Jewish Youth, to provide a self-help group and social activities for young Jewish deaf people. Now to be housed in the Education Room at the Centre, Koleinu's Co-ordinator is Mira Goldberg, who, together with her children, is profoundly deaf, so she understands the problems and needs of both mothers and children in the deaf world. She is build-



The billiard and snooker tables in the Games Room are popular with members of all ages. Martin Bogard, a profoundly deaf member of the JDA Council, is responsible for organising sports events at the Centre and will embark on a 12-hour sponsored tennis marathon in August, to raise funds for communications systems for deaf members.

ing up a 'library' of toys, games and books of special interest to deaf children and is keen to hear from families with one or more deaf children who would like to join the Group. Myra can be contacted at the address and phone/minicom numbers on the back page of this feature.



Myer Solomon, a profoundly deaf Vice-President of the JDA's Council, conducts a bingo session with a difference at the weekly Day Centre. Because members cannot hear numbers called out, they are displayed on an electronic screen and Myer uses sign language to reinforce the message!



# Forthcoming Programmes at the JDA

FROM September this year, the JDA will be introducing a wide range of innovative programmes for deaf and hard of hearing people, as well as those suffering from tinnitus. At the same time, its education projects for hearing people will play a vital part in helping them to communicate with, and understand the problems of, deaf relatives, friends and people they may encounter through work or voluntary activities.

Here are just some of the courses and activities planned for this autumn.

## Beginners' Sign Language Course (10 weeks)

Mondays from 1pm - 3pm,  
starting October 19th - Fee £45.00 per term  
and  
Wednesdays from 7.30 - 9.30pm  
starting October - Fee £45.00 per term

## Introduction to Lip Reading for hard of hearing people (6 weeks)

Sundays from 10.30am to 12pm starting November 1st

## Communication Club

(for basic signers to practice with deaf people)  
Mondays fortnightly from October 26th  
(times to be announced)

## Social Club for deaf people

Sunday evenings  
and  
(from this Autumn) Tuesday evenings fortnightly  
Times on application

## Day Centre for Profoundly Deaf People

Wednesdays

## Hard of Hearing Cultural Group

Monthly  
First meeting October 29th, 2 - 4pm

## Tinnitus Self Help Group

From this Autumn, details to be announced

**Koleinu** (Support group for deaf youngsters and their families)  
Programme of outings in the school holidays.  
Details on application from  
Koleinu Co-ordinator, Mira Goldberg

## Deaf Awareness Programmes

Talks for hearing people at schools, businesses and ladies' guilds etc (small fee charged to cover expenses). By arrangement.

The JDA also welcomes enquiries about tours of the new Centre by small groups interested in deaf awareness.

Further information about these and any of the other facilities offered by the JDA can be obtained during office hours from Pat Goldring, Executive Director, on:

Tel: 0181 446 0502 (Voice & Minicom)

Tel: 0181 446 0214

(Resource Room, Voice and Minicom & answerphone)

Fax: 0181 445 7451

E-mail: [jda@dircon.co.uk](mailto:jda@dircon.co.uk)

General information about the JDA can be found on our Website: [www.users.dircon.co.uk/jda](http://www.users.dircon.co.uk/jda)

This supplement was written and edited by

Sharon Graham

The Jewish Deaf Association

Registered Charity No 209892 Charity Aid Foundation No 101491

# Who's Who at the JDA

**Patrons** Chief Rabbi, Dr Jonathan Sacks, The Rt. Hon The Lord Jakobovits, Lady Jakobovits, The Lord Janner of Braunstone QC.

**President** George M Gee JP

**Vice Presidents** Martin Bogard, Mrs Tilly Goldberg, Mrs Renee Lauter, Mrs Hélène Samuels, Myer Solomon

**Chairman** Mrs Evelyn Gee

**Vice Chairman** Norman Prozzer FCA •  
**Hon Treasurer** Norman Ratiz FAC •  
**Hon Chaplain** Rev Michael Plaskow  
MBE LTSC ALCM • **Community Relations** Philip Brackman • **Executive Director** Mrs Pat Goldring • **Secretary** Kathy Marks

**fed Sign Language Tutor** Kay Kautman  
• **Publicity** Sharon Graham • **Advertising and Marketing** Jeremy Silverstone •  
**Appeals Co-ordinator** Katy Solomons

*Plus a wonderful group of volunteers, whose help we could not do without...!*

**Resource Centre Co-ordinators:** Helen Rabin, Judith Morgan • **Administrative Assistant to the Executive Director** Quali-

Would you like to add your name to our list of volunteers? Contact us now to find out how!

## How to find us

### Our new address is:

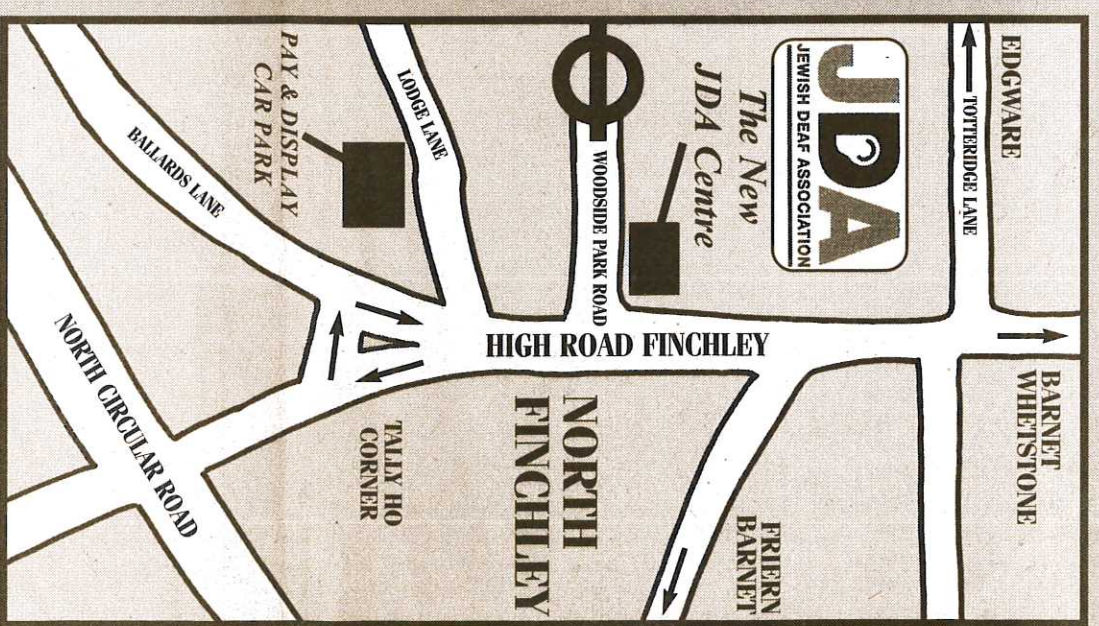
Julius Newman House, Woodside Park Road, off High Road North Finchley, London N12 8RP.  
We are easily accessible from all parts of London.

**By Bus:** Two bus routes pass by the new Centre: No. 125 (from Finchley Central to Winchmore Hill) No 263 (from Archway Station to Barnet General Hospital)  
Nos. 82, 221, 260 and 134 stop at Tally Ho Corner, about 10 minutes walk to Woodside Park Road.

**By Underground:** The nearest tube station is Woodside Park, about 10 - 15 minutes walk from the Centre, at the other end of Woodside Park Road.

**By Car or Taxi:** The Centre is situated just behind Lloyds Bank at the corner of Woodside Park Road and High Road North Finchley (near Sainsbury's).

**Parking:** There are a limited number of spaces in front of the building and also some off-street parking. At busy times, use the pay and display car park in Lodge Lane, one block away.



# How You Can Help

OUR building work is virtually complete, but we urgently need funds for the day-to-day running of the JDA, to purchase specialised equipment, and to finance the exciting and innovative educational and social programmes we are planning for the future.

**£5000** will help fund educational programmes such as computer training for deaf people, lip reading classes and an employment advice club.

**£1500** will purchase sports and children's play equipment for our indoor games room

**£900** will buy a two-way video telephone system for a deaf family to keep in touch

**£600** will purchase a minicom telephone and fax for a deaf person

**£100** will finance educational material for our Resource Room

**£25** will help us to buy special books and games for deaf children attending the Koleinu project

If you would like to make a donation to the JDA, please fill in this coupon and send it to the address above.

You can also help the Jewish Deaf Association by leaving a bequest in your will. Talk to your solicitor about the best way to make your wishes known or call us for advice.

- I enclose a cheque/P.O. to the value of £ .....
- (Please tick this box if you would like a receipt)
- Please contact me about sponsoring an educational course at the JDA
- Please contact me about leaving a bequest to the JDA in my will
- Please contact me about volunteering opportunities

Name .....

Address .....

Postcode .....

Telephone No .....

Or Fax/Minicom .....

(Please delete as necessary)

**JDA**  
JEWISH DEAF ASSOCIATION

Supporting all deaf and hard of hearing people