

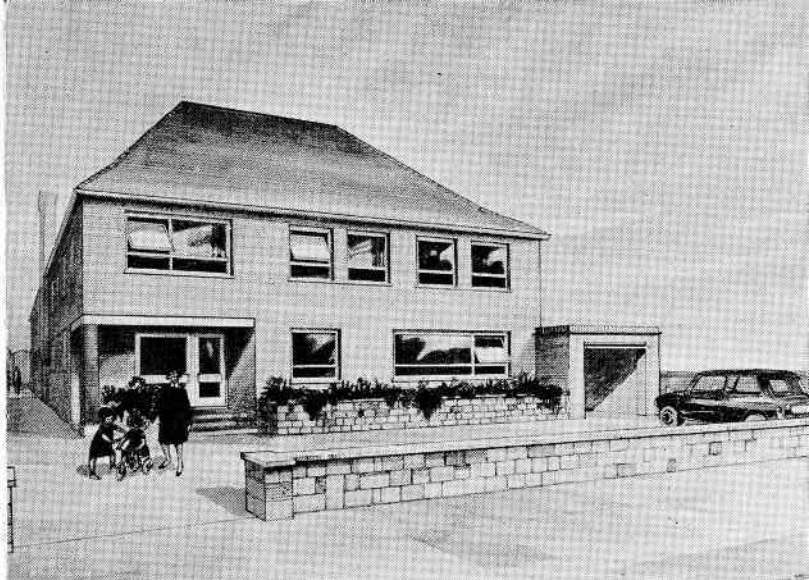
**100
YEARS
OF
HUMANE
SERVICE**

FOR 100 YEARS

we have ministered to the seriously handicapped Deaf Children. We have provided Education, a comfortable home, recreational facilities and loving care through the Residential School, so ably run by Headmasters, Matrons and Teachers, assisted by the numerous Medical Specialists.

None of this could have been accomplished without the very splendid financial help of generous people like you.

Speech Training



The architect's impression of the New Residential Centre

RESIDENTIAL CENTRE FOR JEWISH DEAF CHILDREN

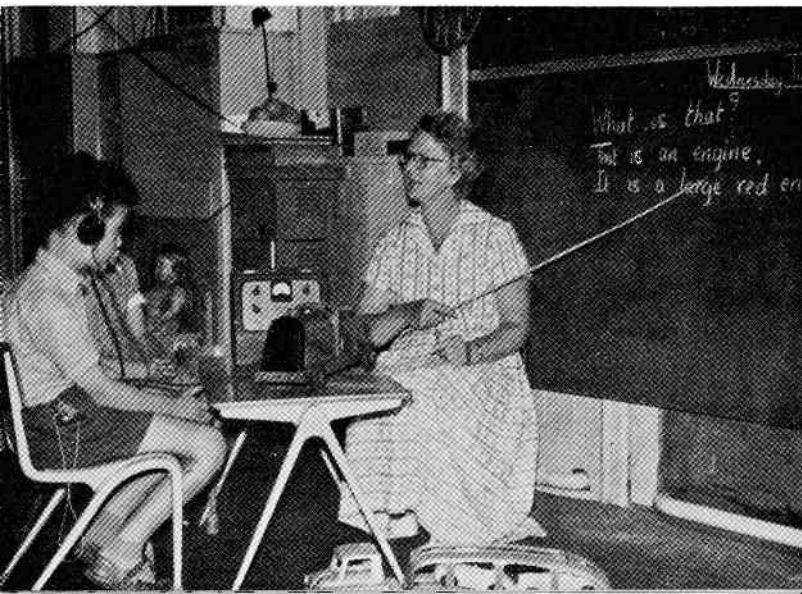
Now, progress demands a turning point in the History of the Residential School and we are in the process of transferring to a modern building, above, which is in the course of erection at

**8 TALBOT ROAD, TOTTENHAM,
LONDON, N.15**

MODERN EQUIPMENT

This new Centre will provide Educational facilities, Recreation, Companionship and all that is necessary to give in some measure, the things in life, which will make these Deaf Children feel they are not neglected. It will have the most modern Auditory Training Equipment and will cater for many hobbies such as photography, needlework and very many of the various Arts. A Director and Housemother will be in charge, assisted by a very able staff, also, specialists in the various subjects will be in constant attendance.

Advanced Individual Instruction



WHAT IS NEEDED ?

£100,000 —

towards the endowment of this new centre.

To this end, and to mark the Centenary, a Dinner is being arranged to take place at the **Dorchester Hotel**, London, on **Sunday, December 19th, 1965**, for which a Brochure will be published to assist in raising the very necessary funds.

Modern equipment is used for developing hearing facilities



High Spirits in the Garden

PLEASE HELP GENEROUSLY.

**DO NOT LET THIS EFFORT AND
APPEAL FAIL.**

**COUNT YOUR OWN BLESSINGS—
PARTICULARLY WHEN YOU ARE
ENJOYING ALL THE BENEFITS THAT
NORMAL HEARING CAN BESTOW
ON YOU AND YOUR FAMILY.**